

THE ROLE OF IDENTITY MANAGEMENT IN FACILITATION AND ENHANCING BORDER SECURITY



ID4AFRICA CONFERENCE WINDHOEK

April 2017

NA IBRAHIM, fsi (Deputy Comptroller General)
Nigeria Immigration Service

Definitions

- Facilitation: the act of processing persons intending to enter or leave a country through National borders
- Border Security: Protecting National Borders (sea, air and land) from unauthorized entry of people, goods, weapons, drug and all forms of illegal entry that may be inimical to the country.
- Identity Management: Means of identifying individuals in a system such as country, a network or an enterprise.

Challenges of Border Management

3

**The world has
never been
smaller than it is
today**



- Globalization has increased the interconnectedness of nation States, speeding up the flow of goods, services, ideas and people across national boundaries.

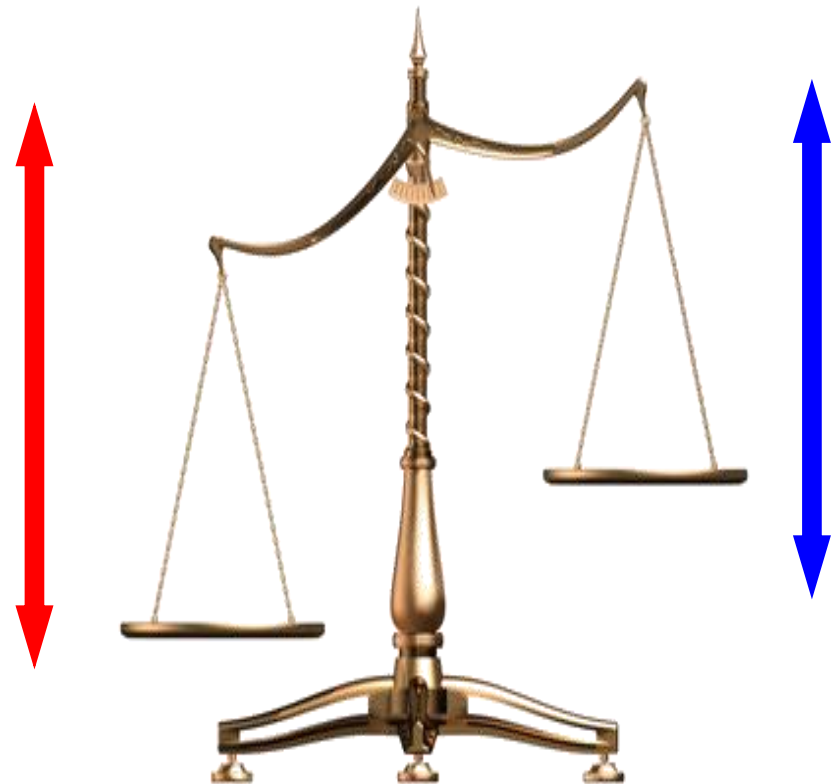


...Challenges of Border Management

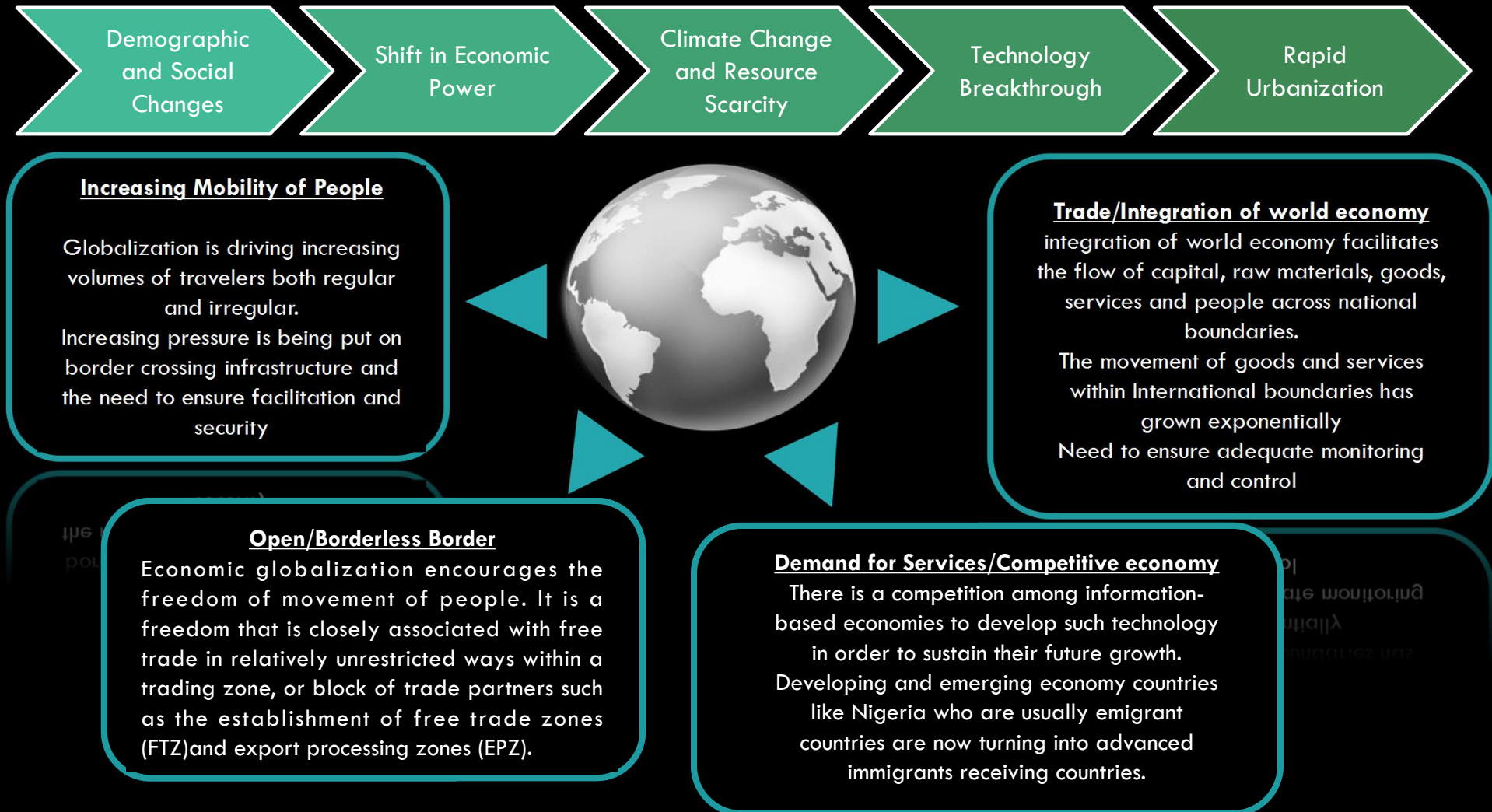
4

With increasing mobility of persons and goods, there is growing public concerns across the world about the social impact of uncontrolled migration and high expectation for public protection, Nations therefore need to address the challenges of ensuring the right balance between **FACILITATION** and ensuring **BORDER SECURITY**.

FINDING THE RIGHT BALANCE



Factors Influencing Global Migration and Impact



Current and Future Global Border Management Trend

6

- **Use of both biometric and biographical data**
- **More effective bilateral or multilateral arrangements**
- **Wider sharing of trend analysis data rather than the data itself for more effective border management**
- **Increasingly sophisticated trans-border criminals**
- **Wider sharing of CSCA certificates to facilitate proper inspection of e-passports**
- **More automation to improve efficiency**
- **Closer collaboration between government agencies and private sector**
- **Big data analysis and identity management**

Nigeria Identity Management – Border Management

Progress on Nigeria Immigration Border Management Information System.

7

Stages of Nigerian Passport Development

Year	Content
1948	Introduction of Nigerian Passport during British Colonial Era called the British West African Passport (Brown Colour/63 page)
1960	Changed colour to light green and reduced the pages to 32 (Manual Passport)
1998	Machine Readable Passport was Introduced – Computer based Passport. Deficiencies: <ul style="list-style-type: none">-Proxy Issuance-Multiple Issuance-Identity Theft-Weak security features
2007	Introduced e-passport to address the deficiencies in MRP. <ul style="list-style-type: none">- No provision for proxy acquisition you must be physically present;-Elimination of multiple acquisition as applicants' data are stored in a Central Data Base;-Strengthened security features;-it complies to the standards of the International Civil Aviation Organization (ICAO) Document 9303

National Identity Management – Border Management

Progress on Nigeria Immigration Border Management Information System.

8

Other Border Management Initiatives

- ❑ Introduction of Biometric Visa
- ❑ Biometric Emergency Travel Certificate
- ❑ Electronic Residence Permit
- ❑ Biometric Registration of ECOWAS Nationals in Nigeria
- ❑ Introduction of Electronic Passenger Registration System
- ❑ Installation of Migrant Information Data Analysis System (MIDAS) donated by IOM
- ❑ Integration of Databases
- ❑ Introduction of APIS
- ❑ Introduction of Border Management Information System

Nigeria Immigration Service Evolving Border Management Information System (BMIS)

9

BMIS improved border movement control and migration management through collection, processing and storing of traveller's information (biographic/biometric)

Also increase security and help fight organized crimes and other illegal activities such as human trafficking, migrant smuggling and fraudulent documents.

- **BMIS – IT based solutions designed to:**
 - ▣ Record passenger movements more accurately
 - ▣ Contribute significantly to the collection and processing of reliable and timely statistical migration data
 - ▣ Assist in the formulation of strategic and tactical intelligence to form proactive migration policies
 - ▣ Provide functionality such as:-
 - Watch listing;
 - Support to visa issuance;
 - Document fraud detection;
 - Biographic/biometric collection; and
 - The use of Advanced Passenger Information (API) for automated risk analysis, pre-arrival processing and screening and intelligence development

Components of BMIS and NIS Vision on Full Implementation

10

**ELECTRONIC PASSENGER REGISTRATION
SYSTEM(ePaRS) CENTRAL DATABASE**



PASSPORT DATABASE



**MIDAS BORDER CONTROL
DATABASE (LAND)**



**COMPREHENSIVE BORDER
MANAGEMENT INFORMATION SYSTEM
DATABASE SYSTEM**



APIS DATABASE



INTERPOL DATABASE



**COUNTRIES WITH BILATERAL
RELATION DATABASE**



SYNCHRONIZATION OF SUSPECT INDEX

UPLOADING OF LOST, STOLEN AND
MISSING PASSPORTS

SYNCHRONIZATION OF SUSPECT INDEX

ASYNCHRONOUS UPLOADING OF LOST
AND MISSING PASSPORTS

ASYNCHRONOUS DOWNLOADING OF
LOST AND MISSING PASSPORTS

SYNCHRONIZATION OF SUSPECT INDEX

Nigerian Travel Documents and National Identity Policy

11

- Harmonization of National Identity into a single database (NIMC and other Stakeholders)
- Nigerian e-passport currently operating on 10-fingerprint mode
- Proposing to upgrade e-passport to polycarbonate and include other biometric feature such as iris
- To introduce biometric ID card to ECOWAS Nationals in Nigeria
- Visa, Emergency Travel Certificate and ECOWAS Travel Certificate to be upgraded to Biometrics

SUCCESS STORY OF THE NIGERIAN E-PASSPORT SCHEME

12

- It has reduced drastically incidences of identity theft
- Eliminate multiple acquisition
- Nigerian e-Passport is ICAO compliant which accords it global recognition
- Nigerian e-passport database is the most reliable source data for criminal investigation in Nigeria.
- To date, about 8 million e-passport issued
- Rolled out in 41 domestic passport offices and implemented in 38 out of 52 Nigeria Foreign Missions

13

The end

Thank you for your attention