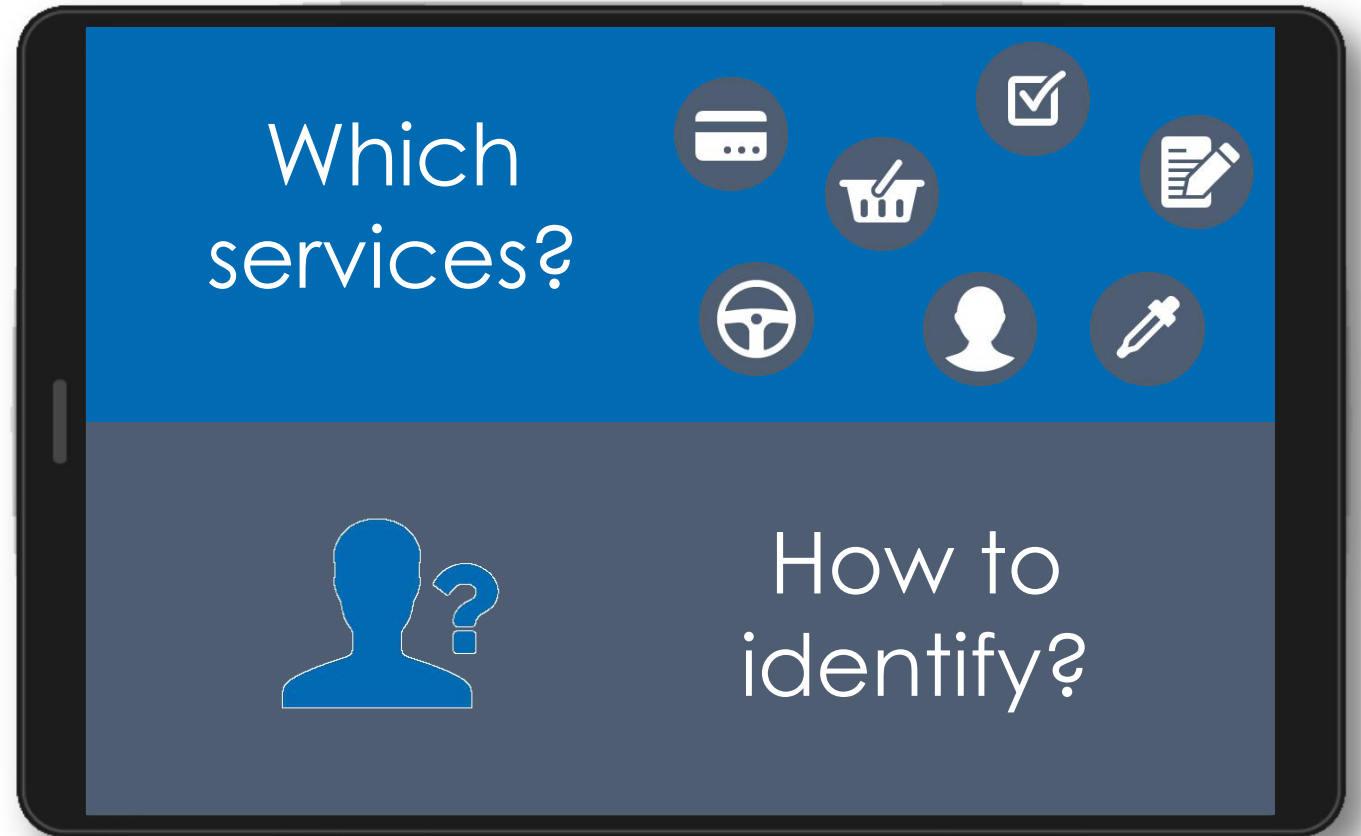


2 questions regarding
mobile ID must be raised

Insight 1

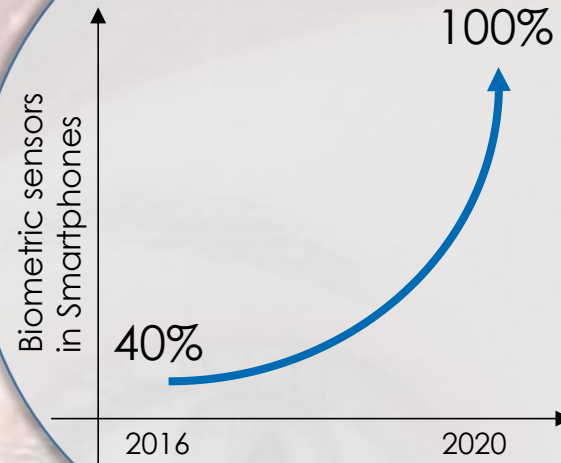
Mobile ID Requires IDentification



If mobile services are the extension of e-services,
mobile authentication is a whole new challenge.

Insight 2

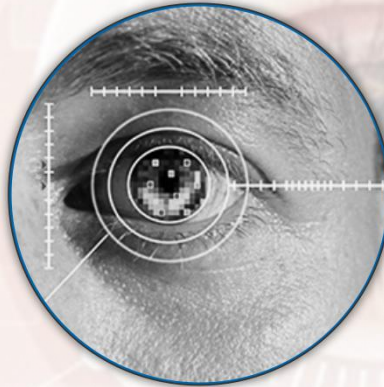
Biometrics
are no more
an option but
a **MUST**



*Acuity Market
Intelligence's 2017*



Speaker



Iris



Face



Fingerprints

Picking a

biometric method

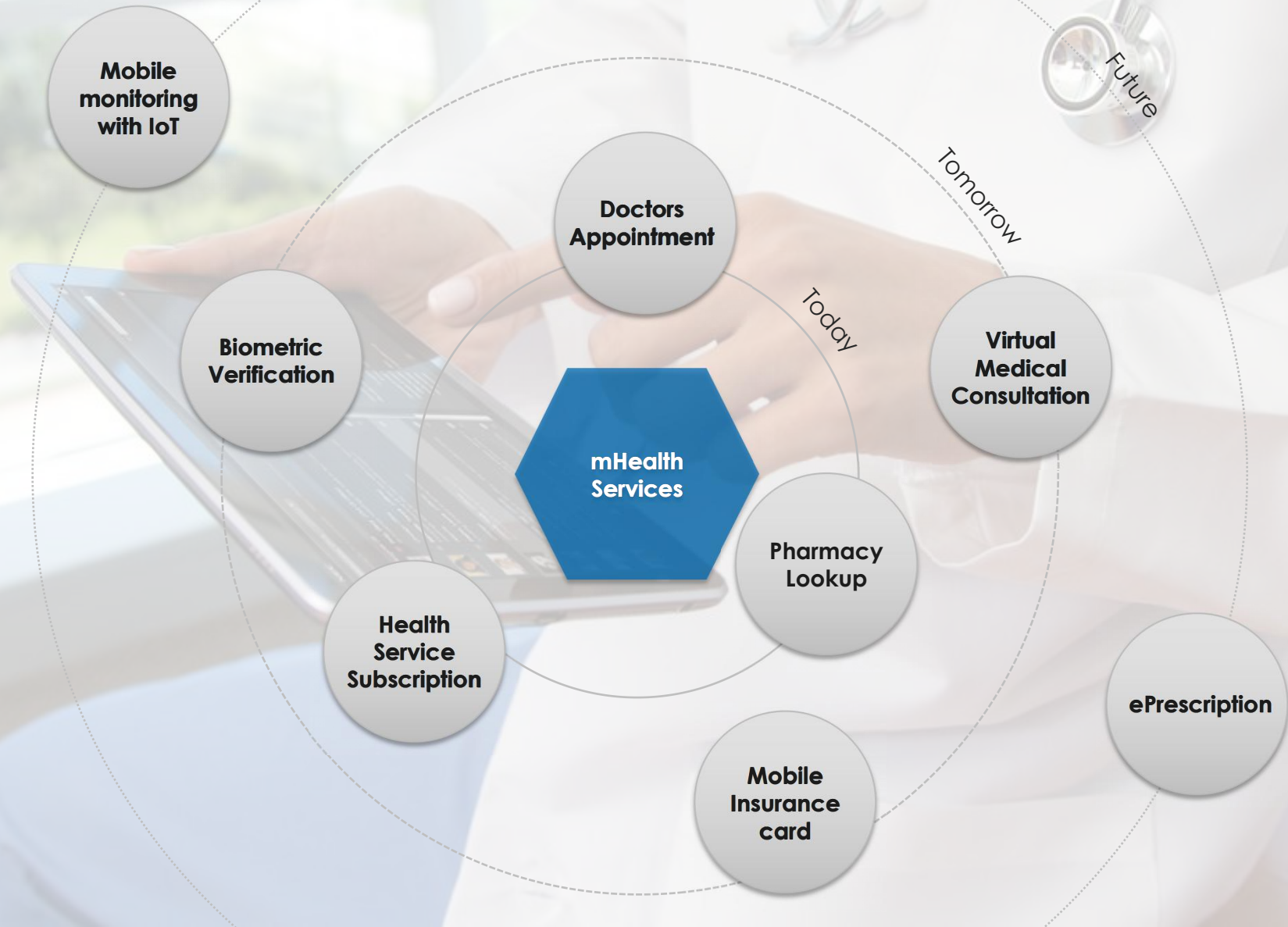
is not only about **performance**

but **ease for enrolment, use & control** too.

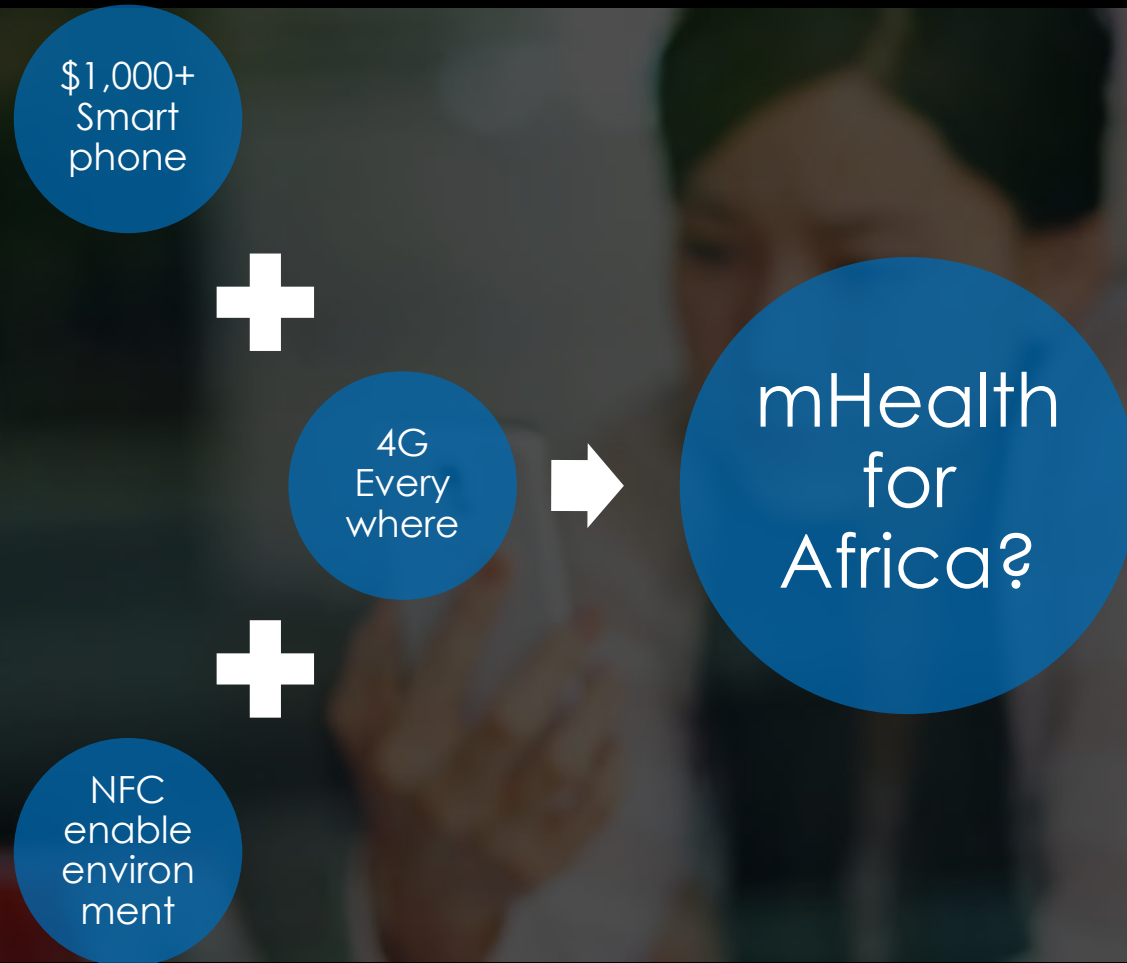
Insight 3

Mobile HealthCare is LIVE

After years of announcements,
mHealthCare services are finally coming



Silicon Valley overflows the world
with “geeky” health Apps ...



The mHealthCare vision

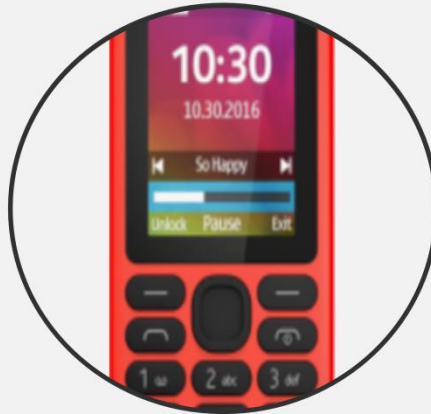
...that lack pragmatism in today's environment

Credits for video @StatDoctors

The status in Africa

An exciting emerging environment

1

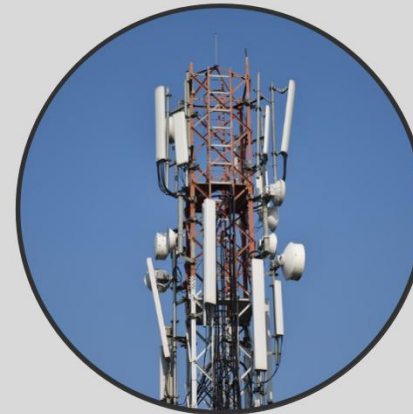


Devices

Feature vs Smart

- Up to **90%** mobile adoption
- Only **10%** smartphone adoption (average)

2



Infrastructure

Data coverage

- **4x** Africans have access to a mobile vs land line
- **1%** of 4G connections are located in Africa

3



mServices

and mobile control solutions

- Many advanced SMS-based services:
 - mPesa
 - mFarm
 - ...
- mServices > eServices

Enrolment and “3T” approach:
register citizens once for good...

Type

- Face-to-Face enrolment
- Remote / mobile enrolment
- Federated identity

Target

- Primary User
or
- Dependant beneficiaries

Technique

- Fingerprints vs Face vs Speaker vs ...

...and mutualize the effort as a service for others

mHealthCare
what to consider?

1. Enrolment

Unlike physical ID, the lifecycle of multiple mHC identities must be strictly managed



Reliable governance, automatized workflows and risk management are the key

mHealthCare
what to consider?

2. Identities Management

Making a “Fail-Safe” mobile HealthCare platform

What if ...



Degraded scenarios are often skipped
but remains ‘sweet spots’ for attackers

mHealthCare
what to consider?

3. Fail-safe

Conclusion and Take-aways

Identification
on a mobile is
key but
not trivial

mHC solution
design shall
include
degraded
mode

mHC will
include risk
management
for great
benefits

Come to discuss with us
about mHC projects or to
discover our solutions

Arjo Booth #F1 !

Thank you for your attention

~

Merci pour votre attention

mHealthCare

Arjo Mobile App Demo