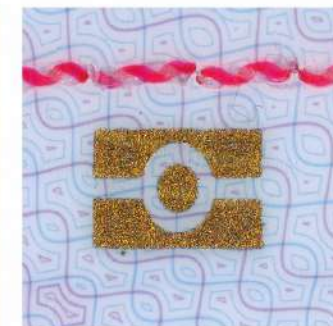


BIOMETRY IN IDENTITY DOCUMENTS ECOSYSTEM

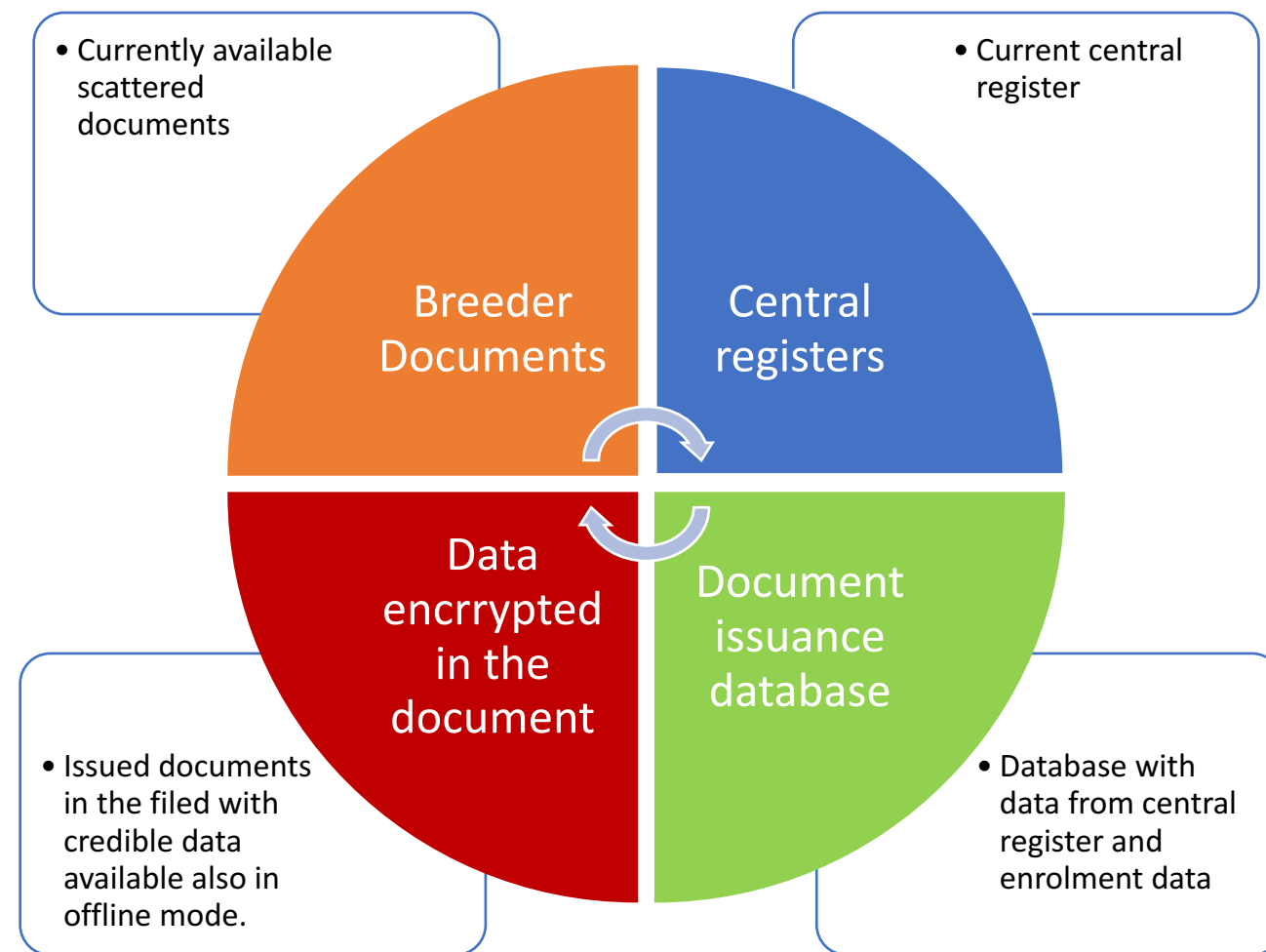


AGENDA

- **Why ID document is that important**
- **Biometry as indispensable feature of modern ID documents**
- **Examples of comprehensive issuance system and its main components**
- **Not only biometry that matters**

WHY ID IS THAT IMPORTANT

- ID document is crucial for building efficient state administration
- ID document is the focal point of citizens identity records stored and managed by the State



WHY ID IS THAT IMPORTANT

Having ID document is basically the prerequisite of:

- The right to use all services rendered by the State / Municipal authorities
- The right for health care and social care services
- The right to vote
- The right to cross borders

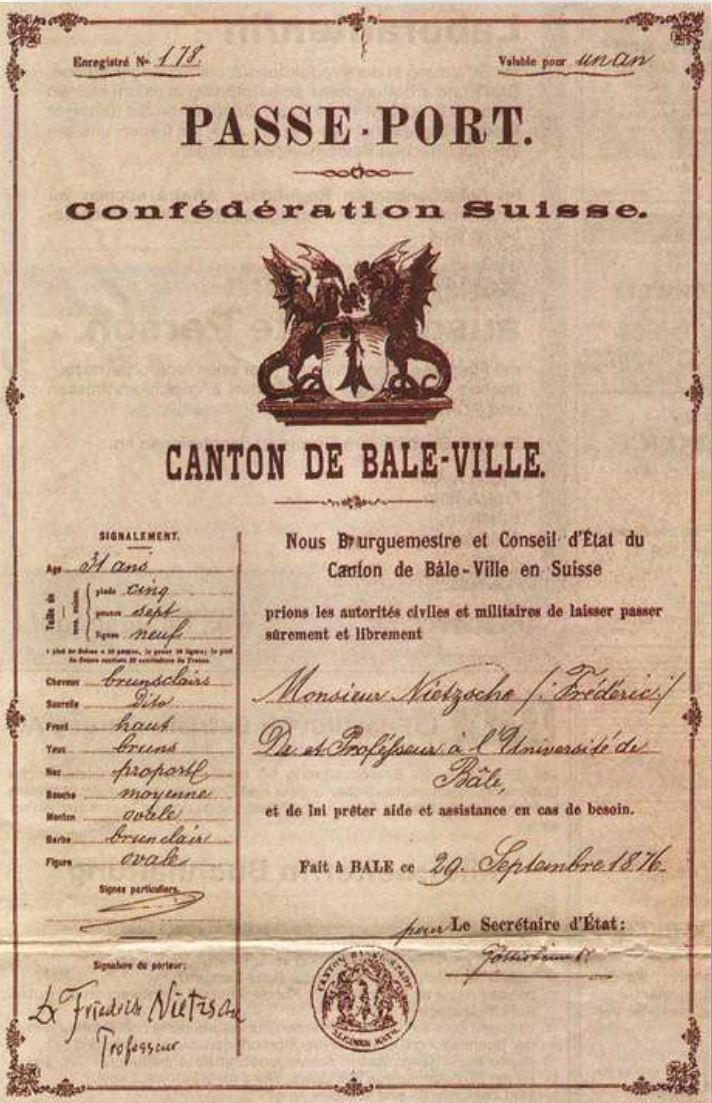
ID documents facilitate:

- Security Measures / Law Enforcement
- Payments and taxes
- Proper management of privacy question

Biometry as indispensable feature of modern ID documents

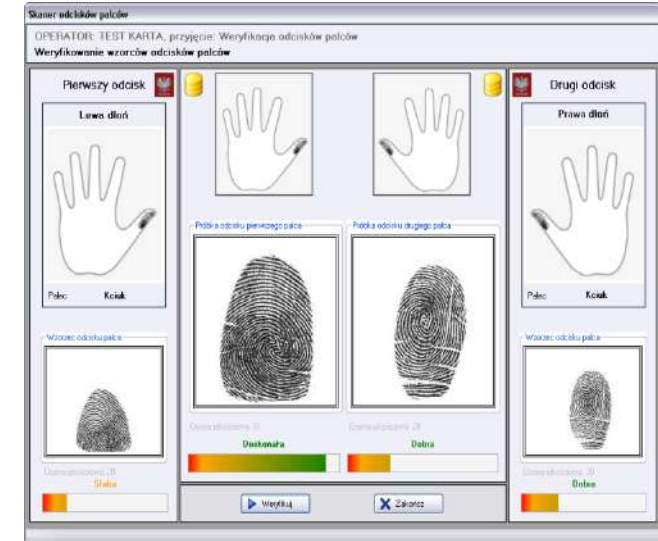
Would you still be willing to issue such a document as Fridrich Nietzsche used:

Is such a passport still consivable:



Biometry as indispensable feature of modern ID documents

- Face
- Fingerprints
- Iris



Natural link between a physical document and a real person – especially when used together.

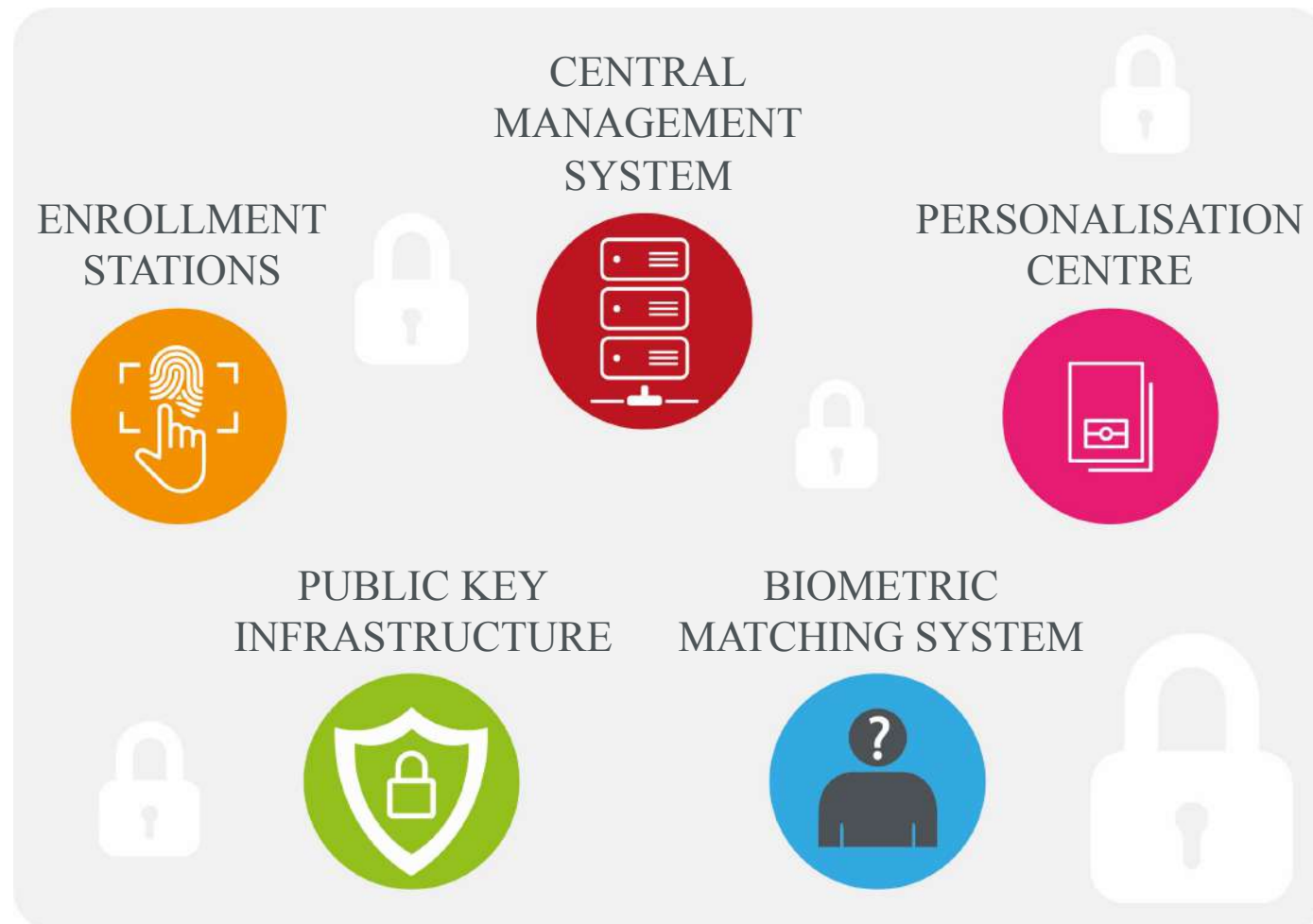
E-DOCUMENTS STAKEHOLDERS

- Globally interoperable biometric
- Contactless chip
- International standardized Logical Data Structure

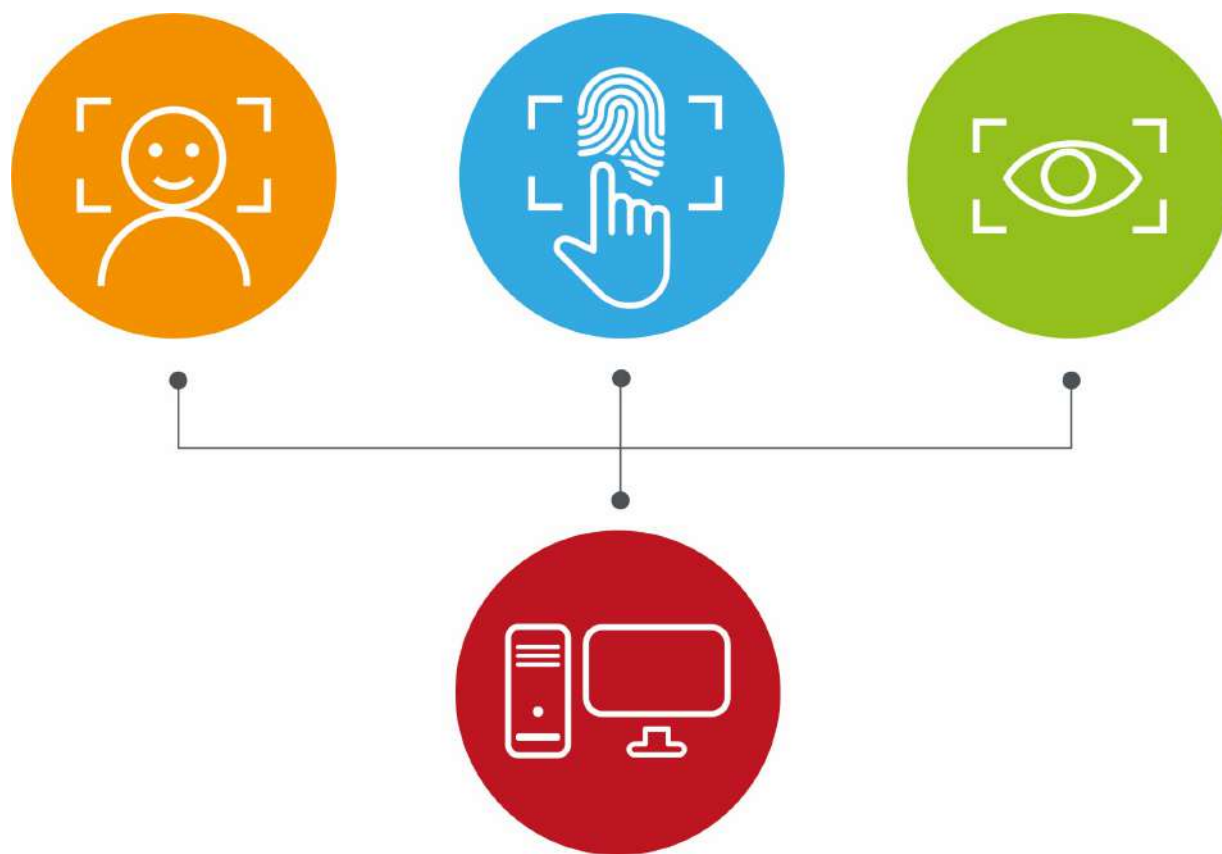


CHARACTERISTICS AND ARCHITECTURE OF THE ISSUANCE SYSTEM

- ICAO and ISO compliant
- Secure solutions
- Three biometric features
- Functions in online/offline mode

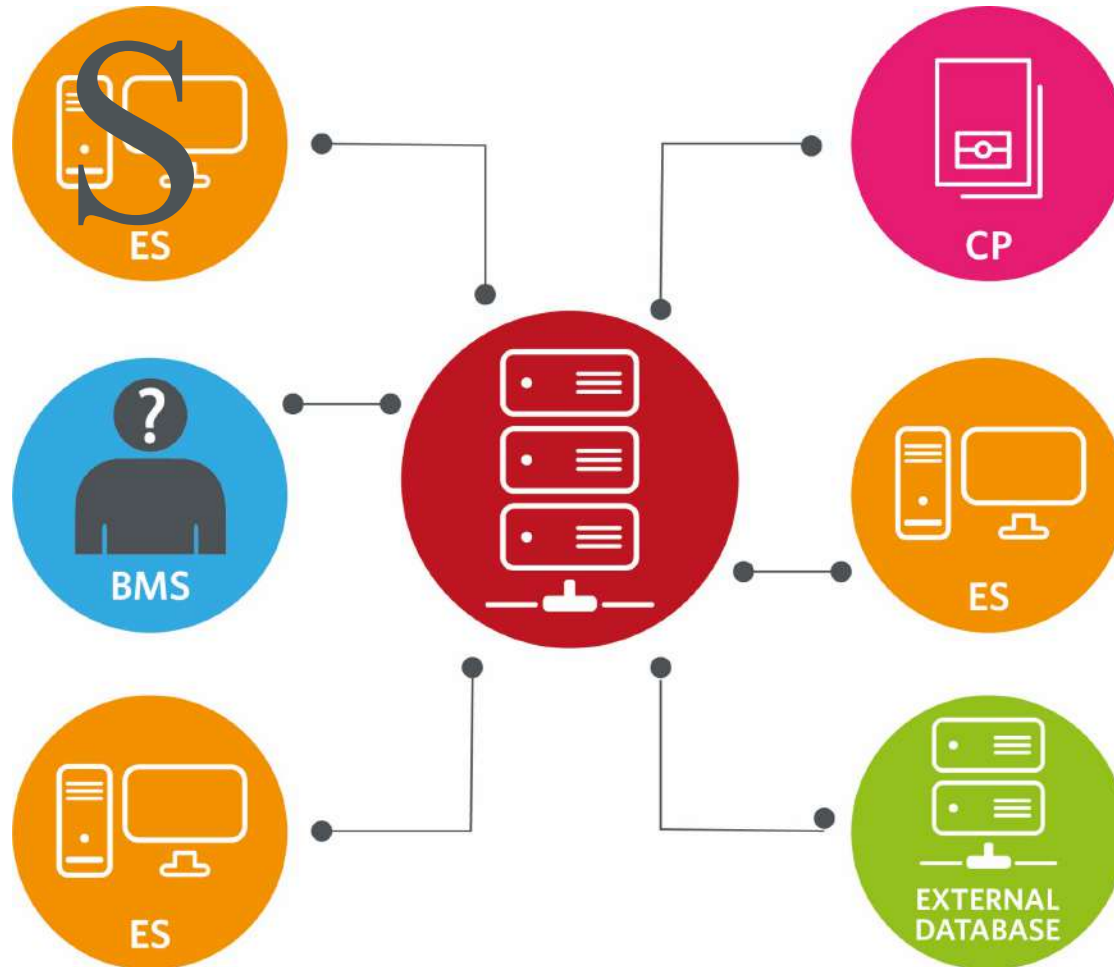


I ES | ENROLLMENT STATION



- Collection of all data required for issuance of an eDocument
- Emission of the document after personalization
- Verification before emission with biometric data

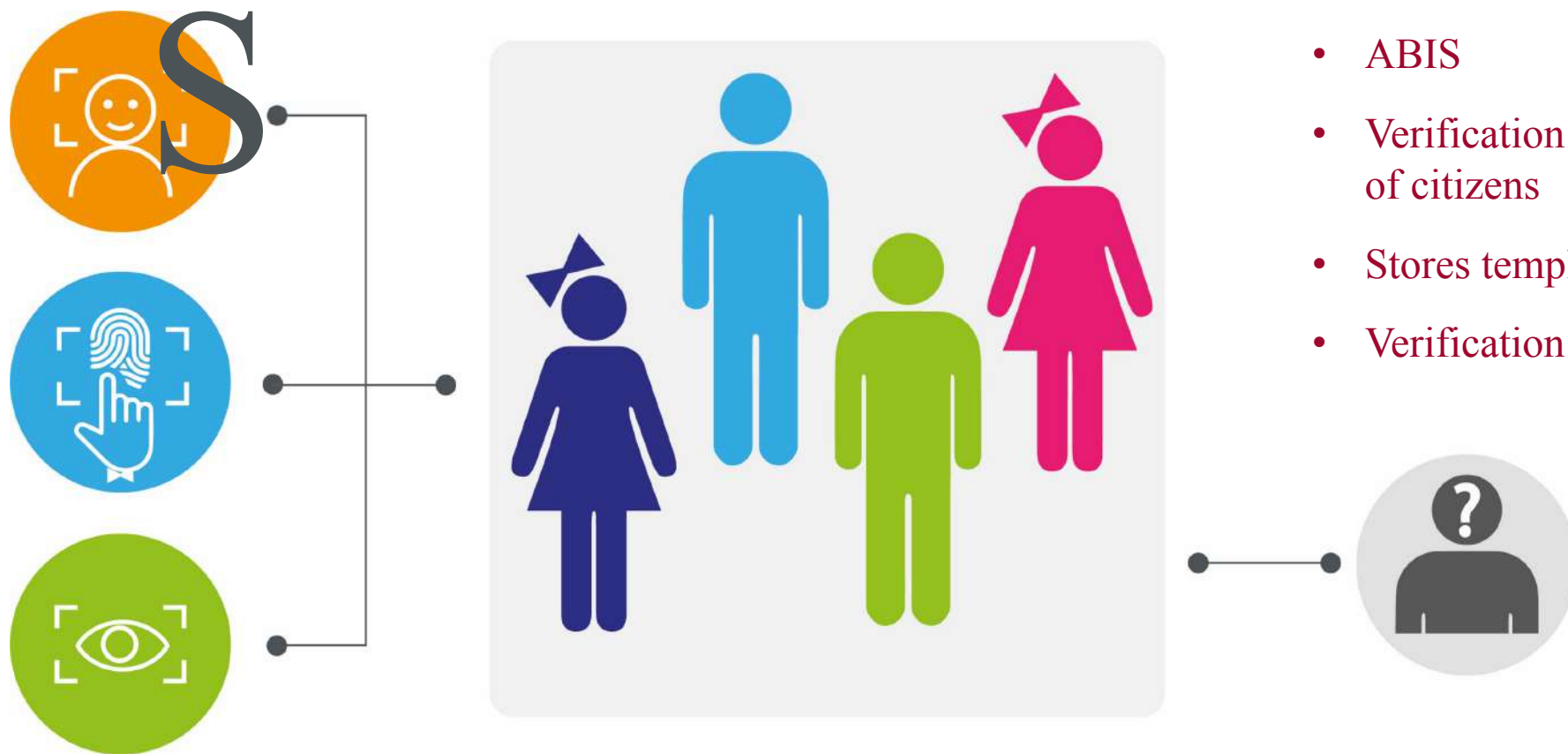
II CM | CENTRAL MANAGEMENT SYSTEM



- Principal module for management
- Storage of all applications
- History of an application
- Communication with external databases

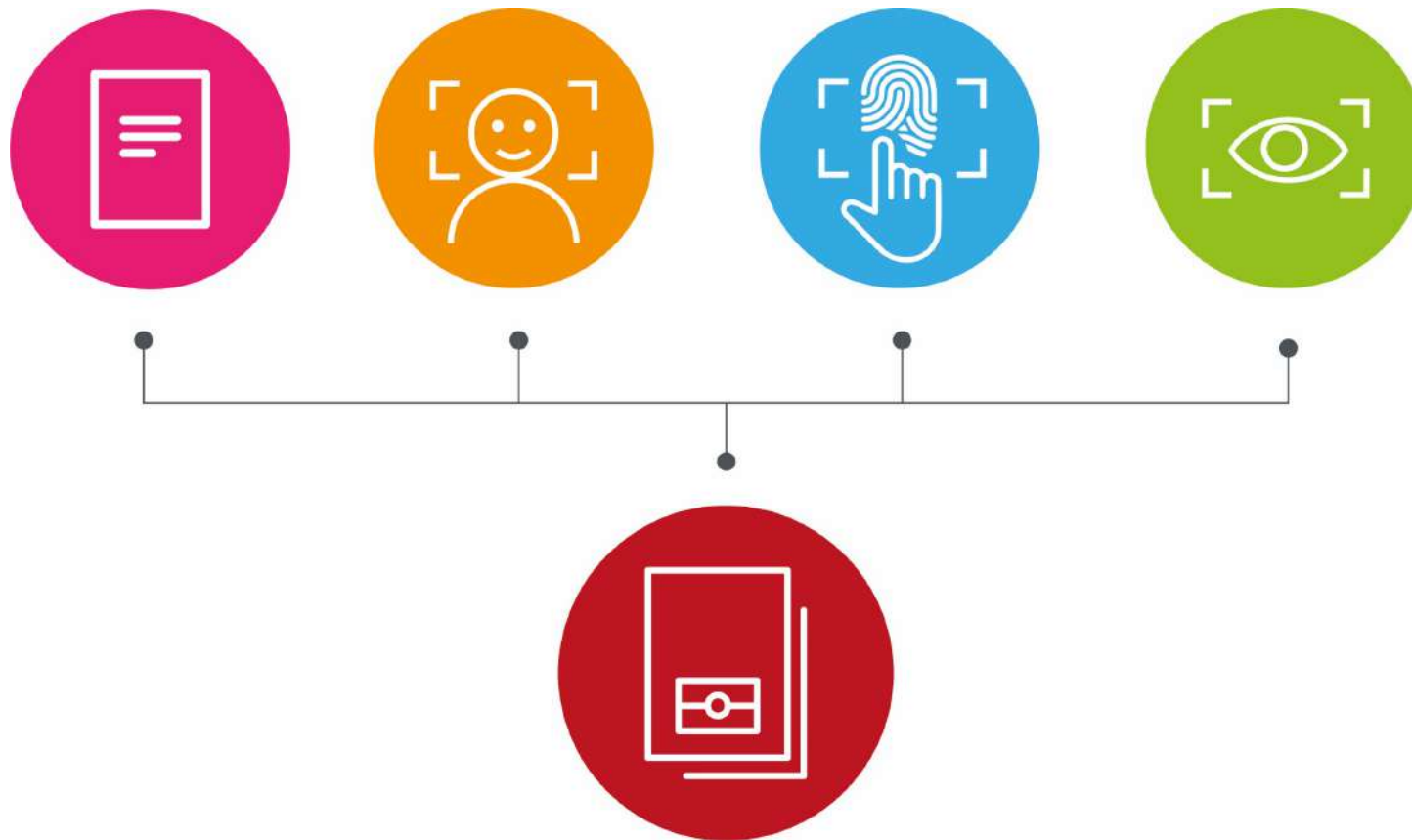
II BM

BIOMETRIC MATCHING SYSTEM



- ABIS
- Verification and identification of citizens
- Stores templates
- Verification of duplicity of entries

I CP | PERSONALISATION CENTRE

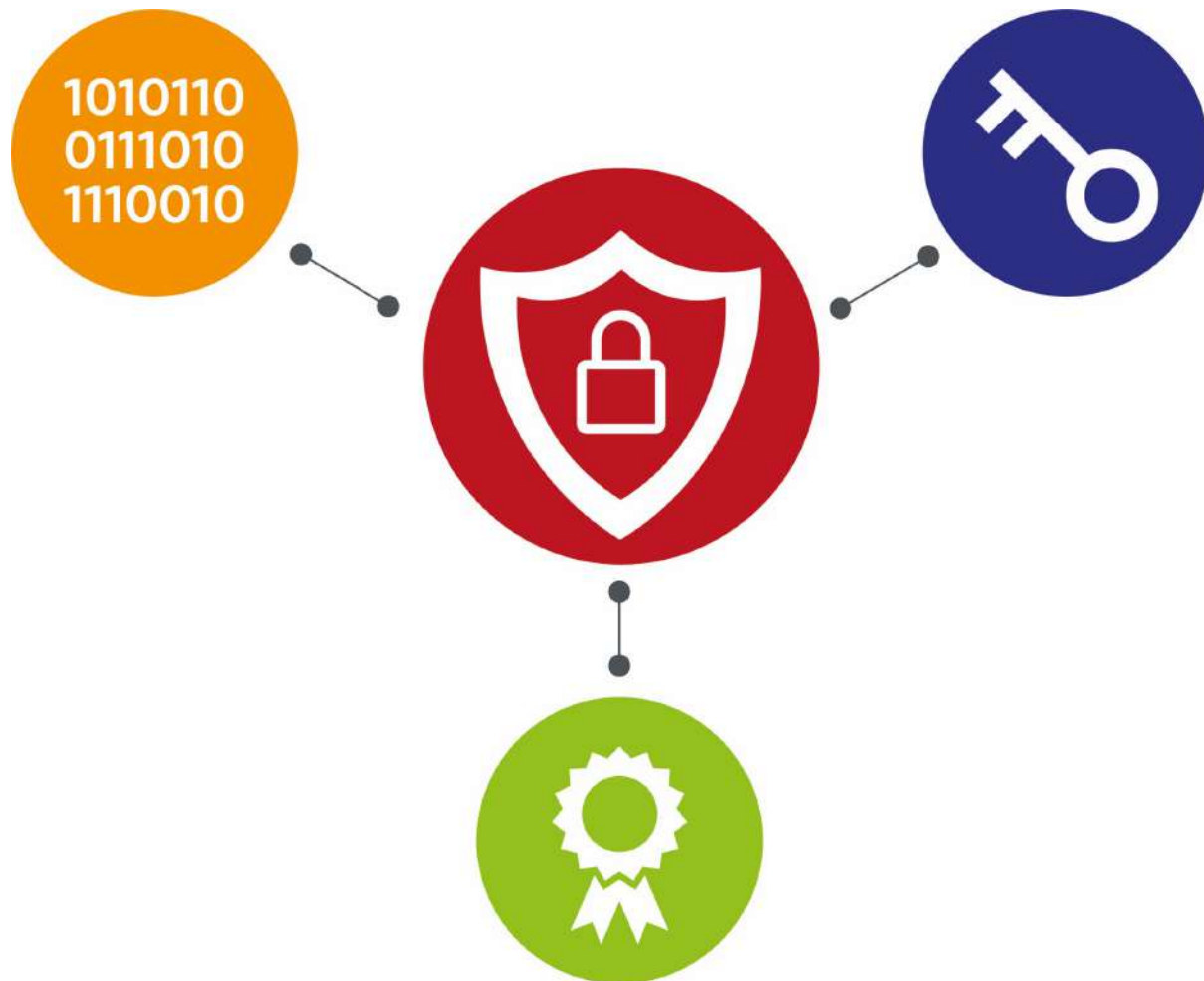


- Personalization of a physical document
- No limits to the machine type or style of personalization
- Quality assurance of the document
- Packing unit and dispatch



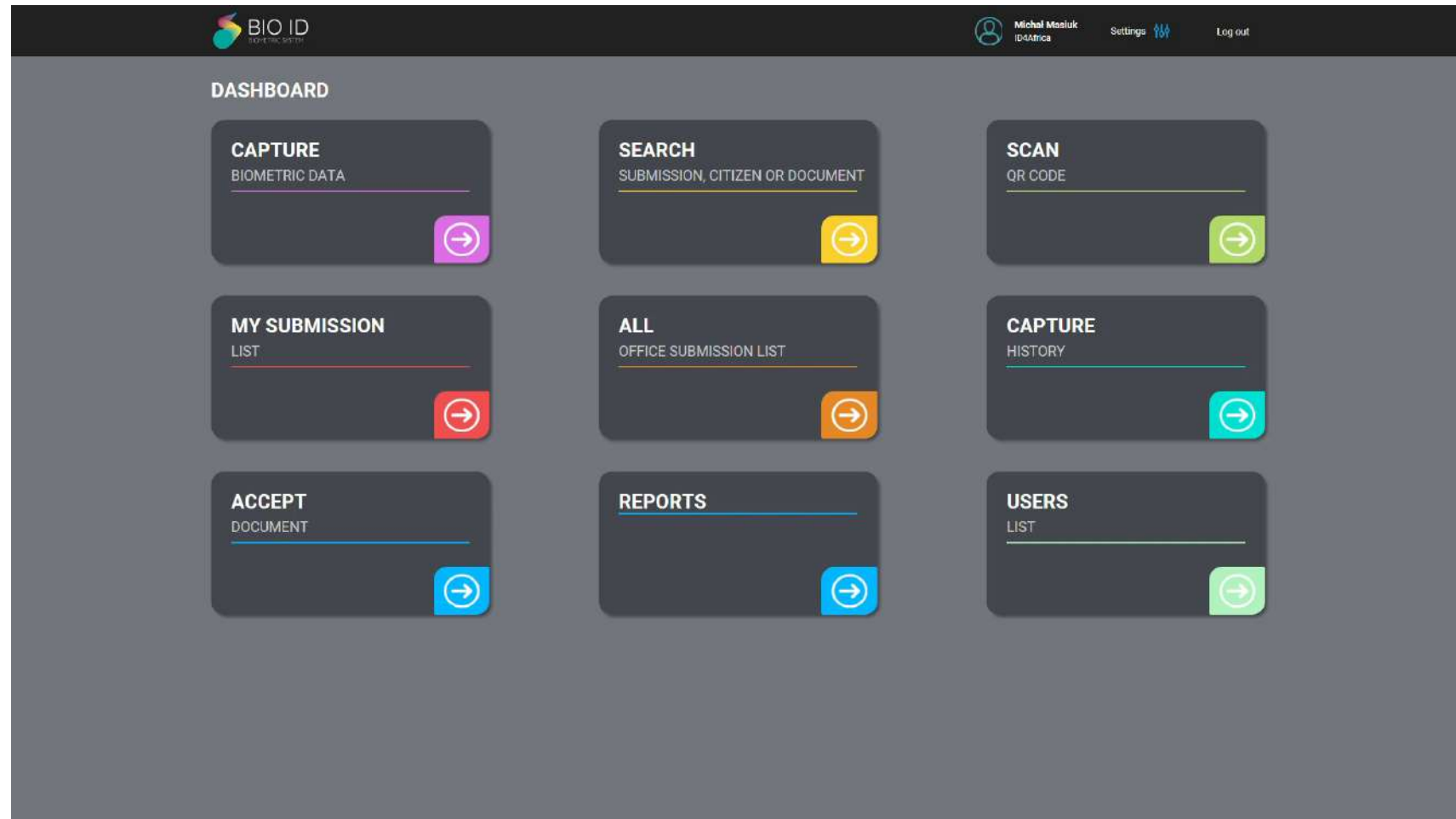
PK

PUBLIC KEY
INFRASTRUCTURE

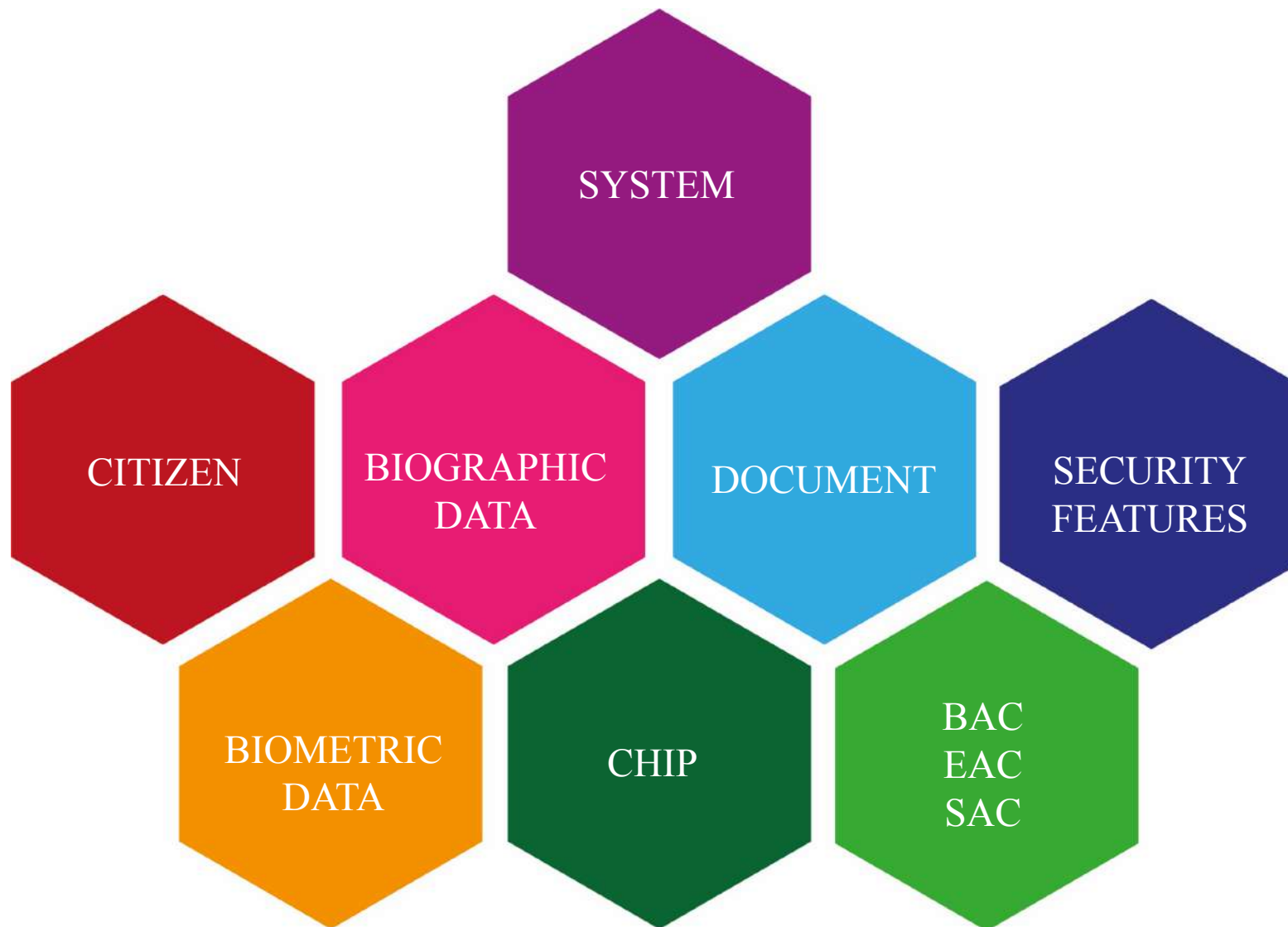


- Generation of certificates
- Verification of passports, expiry dates
- Confirmation of certificate validity

INTERFACE, FUNCTIONALITY AND ICAO COMPLIANCE



ISSUANCE SYSTEM INTEGRITY



MACHINE READABLE FEATURES – VERSO ID

- Origination from security feature well-known to majority of citizens
- Bases on personalized data
- No additional personalization machine needed



MACHINE READABLE FEATURES – NIR TIMESTAMP



- Near-infrared absorbing and inactive in daylight
- Detected by standard devices and sensors
- Possibility of printing variable data & images
- No additional space needed
- Blank cards eliminated



CONCLUSIONS

| SECURITY

- Elaborating unique security features
- Merging sophisticated document production techniques with advanced IT / chip solution

| EFFECTIVENESS

- Creating complete issuance systems from document production and data collection to personalization and delivery

| COMPLIANCE

- Comprehensive customer needs analysis
- Full adherence to international standards
– ICAO / ISO / BSI



SEE YOU
AT BOOTH
D14

THANK YOU
FOR YOUR
ATTENTION

Piotr Machado
+48 727 042 171
p.machado@pwpw.pl